

Reduced Inequalities

REDUCED INEQUALITIES

There is a 14% increase in the number of first-generation students, which is a handsome figure compared to the previous statistics. This clearly indicates the proficiency of government policies to reduce inequalities

14% of the total students from developing countries belong to low-income or middle-income level. A 20% increase in special quota was assigned by PSU for international students in all the fields.

0.3% differently-abled students are enrolled at PSU with special treatments without any extra cost, providing opportunity to be equal and well-established citizens of the Kingdom.

Prince Sultan University is an equal-opportunity institute that strongly prohibits all forms of discrimination based on gender, race, ethnicity, religion, nationality, or disabilities.

Reference: Academic Year 2022

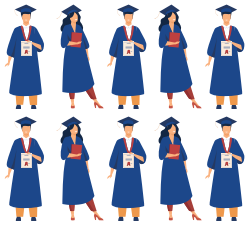
Achievements



- More than 14.6% of total number of first-generation students at PSU starting their first-degree.
- More than 14.2% of total number of first-generation students from developing countries at PSU starting their first-degree.
- 17 students & 4 staff with disabilities at PSU.

Metrics

First-generation students



Number of students - 5442



Number of first-degree students - 518



Number of first-generation students starting a first degree - 76

Students from developing countries

This image shows the proportion of international students at all degree levels who are from low-income and lower-middle-income countries, as defined by the World Bank.



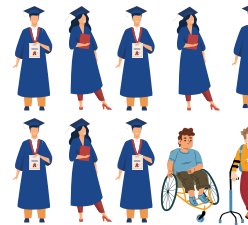
Number of first-degree students - 518



Number of first-degree international students from developing countries - 74

Students and staff with disabilities

This graphic shows the proportion of students and staff with disabilities



Number of students = 5442

Number of students with disability = 17

Number of employees = 803

Number of employees with disability = 4

EVIDENCES

10.2.1: Be the First

What It Means to Be a First-Generation College Student

Being a first-generation college student represents progress for a family. Most people who decide not to go to college do so because they don't think they can afford it. Food, living expenses, textbooks, and also tuition all represent a big amount of money. And this is completely understandable that some families would be intimidated by the price tag. (Although it's important to remember that the "sticker price"—aka the published price of tuition—is not necessarily what students will have to pay. The "net price" is what students and families will pay, after scholarships and financial aid are taken into consideration.

Prince Sultan University takes initiative on this for those students they cannot afford their expenses university will help out through scholarships based on merit and through financial aid for low-income families, therefore in the future, these students will shine as a major part of society.

Hot Line

الخط الساخن

لخدمات التوجيه والإرشاد

Service Objective: These services provide assistance to students with academic, psychological, and social issues, providing the student with quality, confidential guidance, and counseling by monitoring the student and counseling link on the hotline.

How to Contact the Service: The person responsible for the hotline service is Mr. Abdulrahman Almutairi, who is the Guidance Counselor at the Deanery of Student Affairs, whose contact information are the following:

• Tel: 011 494 8126
• Email: ahammadi@psu.edu.sa

Service Location: 011 494 8126

أهداف الخدمة: هذه الخدمات تهدف إلى تقديم الدعم الأكاديمي، النفسي، والاجتماعي للطلاب، وتوفير التوجيه والإرشاد للطلاب من خلال مراقبة الطالب وخدمة الإرشاد والتوجيه.

كيفية الاتصال بالخدمة: الشخص المسؤول عن خدمة الخط الساخن هو السيد عبد الرحمن الموترى، وهو مستشار الطلاب في عمادة شؤون الطلاب، والتي يمكن التواصل معه بالطرق التالية:

• هاتف: 011 494 8126
• بريد إلكتروني: ahammadi@psu.edu.sa

موقع الخدمة: 011 494 8126

بيان بأسماء الطلاب للمواكبة (الاحتياجات الخاصة)

الترتيب	اسم الطالب	الرقم الجامعي	الكلية	موقع طالب المواكبة
1	الهندسة	موقع طالب المواكبة
2	الهندسة	موقع طالب المواكبة
3	الهندسة	موقع طالب المواكبة
4	الهندسة	موقع طالب المواكبة
5	الهندسة	موقع طالب المواكبة
6	الهندسة	موقع طالب المواكبة
7	الهندسة	موقع طالب المواكبة
8	الهندسة	موقع طالب المواكبة
9	الهندسة	موقع طالب المواكبة
10	الهندسة	موقع طالب المواكبة
11	الهندسة	موقع طالب المواكبة
12	الهندسة	موقع طالب المواكبة
13	الهندسة	موقع طالب المواكبة
14	الهندسة	موقع طالب المواكبة
15	الهندسة	موقع طالب المواكبة
16	الهندسة	موقع طالب المواكبة
17	الهندسة	موقع طالب المواكبة
18	الهندسة	موقع طالب المواكبة
19	الهندسة	موقع طالب المواكبة
20	الهندسة	موقع طالب المواكبة

TLC

Introduction to SEN & Dyslexia

By Dr. Jamal Al Said

NOVEMBER 6, 2019

FROM 4:00 TO 6:00

PRINCE SULTAN HALL

Measures against discrimination

Prince Sultan University has a policy to manage the different needs of students, including disabilities that they may have. Below is some evidence from the manual for admissions and resources for admission for students



Prince Sultan University PSU Policy Management System

Accessibility, Non-discrimination, and Harassment Policy

Policy Code: GV 0007

Policy Name: Accessibility, Non-discrimination, and Harassment Policy

Handling Unit: The President Office

Date of Current Revision: August 2020

Approved by: University Council

Date of Approval: 02/09/2020

Purpose

Prince Sultan University provides a healthy equal-opportunity educational environment free from discrimination and all types of harassment. The mission is to foster a pleasant atmosphere where all can learn, innovate and achieve.

Definitions:

Discrimination: is treating a person differently based on gender, race, disability, nationality, or religion

Harassment:

Any behavior or attempts to offend, harm or offend a person. This includes physical, written or published using social media

b. Policy Statement

Reference service at the Central Library is an important element to support libraries' defined objectives, vision and mission. Central Library provides high quality reference services to all PSU users. Library staff answers user queries, whether received through telephone, email, or in-person visit to reference counter.

Professional librarians having at least master degree in library science or related field during the opening hours of library provide the service. **Users with disabilities are treated amiably, with dignity and respect.**

Central Library orientation services are planned to develop user skills, to search, discover, evaluate, access, and use relevant print and electronic resources. Reference librarians at Central Library contribute to orientation activities by organizing orientation programs and preparing information literacy tools and guides.



الخدمات المساندة لأدوي الاحتياجات الخاصة في المكتبة المركزية
تولي المكتبة المركزية بالجامعة اهتماماً كبيراً بالخدمات الخاصة حيث تقدم خدمات وتسهيلات مساندة تساعد على الاستفادة من خدمات ومصادر المكتبة المختلفة، منها جهاز الإغارة والإبراج الذي يمكن من خلاله التحكم بارتفاع الجهاز للأعلى والأسفل، بالإضافة إلى الشبكات المساندة، كما خصصت لمن المكتبة مساحة خاصة لأغراض البحث والدراسة والاطلاعة.

Special Needs Services through the Central Library
PSU Central Library located on the Women's Campus provides various services to all users, including those with disabilities. For physically challenged users, they will be able to check out and in the library materials with help from dedicated librarians or using book with adjustable height and platform.



Linktree*



library_CW@psu.edu.sa

PSU's commitment to SDG 2030

Mission

PSU is committed to United Nations Sustainable Development Goals (SDGs) through effective institutional resource management, innovative teaching and learning, research, national and international partnerships, continuous studies, and outreach. PSU shall undertake the following activities: form higher and steering committees, evaluate each SDG, formulate and develop related SDG policies, conduct awareness campaigns to the PSU community, establish a sustainability office, identify the SDGs related to each college, program, and course, and lab centers at PSU, and implement sustainability-related initiatives.

Vision

Prince Sultan University strives to support Saudi Arabia's Vision 2030 and the United Nations Sustainable Development Goals (SDGs) by paving the way for higher education in KSA and Middle East.

Mission

Supporting the Saudi Arabia's Vision 2030 and the PSU's strategic directions, PSU aligns its mission with SDGs by providing quality education, sustainability initiatives, lifelong learning, scientific research, and community service



P.O. Box No. 66833, Rafha Street, Riyadh 11586,
Saudi Arabia.

©2023 All copyrights reserved

